

# ECCG INTERPRETATION 4



PRONA PRONA N.2

|    |    |    |    |    |    |    |    |    |
|----|----|----|----|----|----|----|----|----|
| 1  | 2  | 3  | 4  | 5  | 6  | 7  | 8  | 9  |
| 10 | 11 | 12 | 13 | 14 | 15 | 16 | 17 | 18 |
| 19 | 20 | 21 | 22 | 23 | 24 | 25 | 26 | 27 |

21. Question

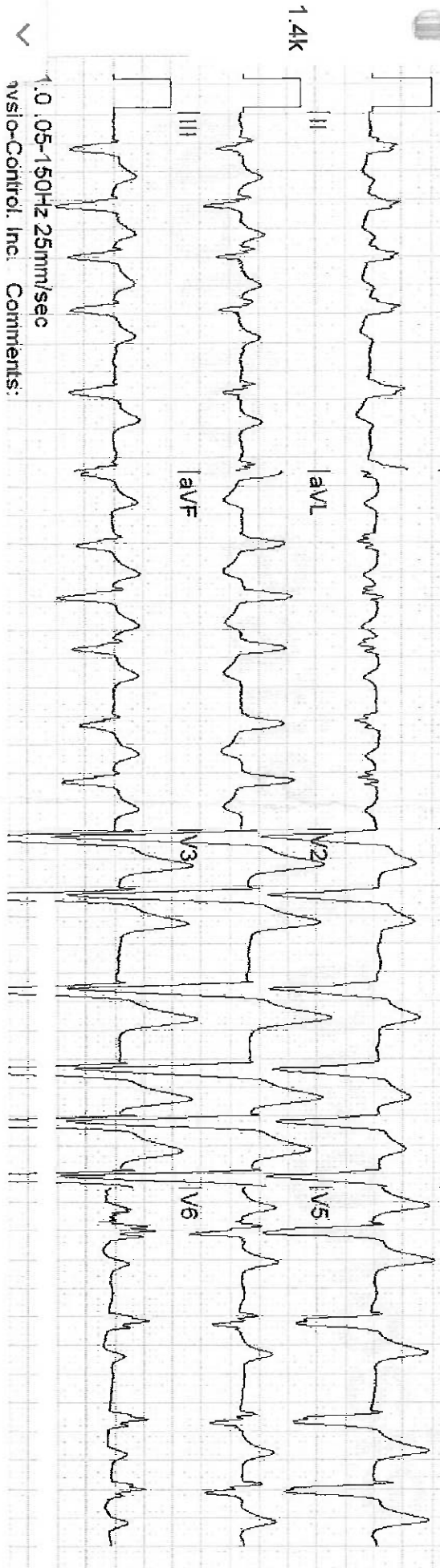
Wakes up with palpitations and irregular heartbeats.

*Handwritten signature*

PRONA ESTI BASTIA  
Mora

Question 21 of 51

Age: 78  
Sex: M  
12-Lead 1  
23-02-2013  
PR 0.000s  
QT/QTc: 0.342s/0.497s  
HR 127bpm  
04:42:47  
QRS 0.128s  
P-QRS-T Axes: 0 -45 103



1.0 05-150Hz 25mm/sec  
vivo-Control, Inc. Comments: